

*Cwmffrwdor Primary School
Happy, together, learning and caring*



Governors' Annual Report to Parents 2016-17

Contents

Introduction	Page 3
Welcome by Nicola Davies Chair of Governors	Page 4
Introduction Head Teacher	Page 5
Governors	Page 6
School Vision and Aims	Page 7
School Day	Page 9
Attendance 2015 - 16	Page 10
The Curriculum	Page 10
Children with Additional Educational Needs	Page 12
Children with Disabilities	Page 13
School terms and holidays	Page 14
National Curriculum Assessment Results	Page 15
Target Setting	Page 18
Extra Curricular Provision	Page 19
The Eco Committee	Page 21
The School Council	Page 22
Social Aspects to Learning (SEAL)	Page 23
The Foundation Phase	Page 24
The School in the Community	Page 25
School Staff	Page 26
Financial Report	Pages 27

Introduction

As a result of the Education Reform Act 1988, Governors, in partnership with the Head teacher, are now responsible for all school affairs - curriculum, discipline, staff appointments, admissions to school, RE, community use of the school, changing school activities and reporting to parents. Each Governor has a link with a particular area of the curriculum.

Full meetings of the Governing Body have taken place every term. There were committee meetings each half term. At each meeting Governors received and considered the Head teacher's written report on the school and its work. The Head teacher's Report always follows the same format, reporting on issues such as Standards, the Curriculum, the School Improvement Plan, Building and Health and Safety issues. Governors are appointed to participate on a range of committees, such as the Finance Committee. The Governors have approved several policies on a rolling programme. Governors are expected to attend some of the training offered by the Local Authority and the Education Achievement Service (EAS).

Welcome from Nicola Davies - Chair of Governors

Welcome to the annual report of the governing body of Cwmffrwdoer Primary School for 2016 - 2017.

I am delighted to present the annual report of the governing body of Cwmffrwdoer Primary School for 2016 - 2017. It is a great privilege to be introducing this report, having been re-elected as Chairperson by my fellow governors at our recent AGM.

Our core purpose as a school is to ensure that all pupils becomes resilient, independent, confident and ambitious learners who enjoy and celebrate success. We aim to do this by developing a caring community, with a sense of collective responsibility; staff, pupils, parents, governors and the local community, all working together with a common goal and a commitment to learning. This is encapsulated in our school motto 'Happy together, learning and caring'.

High academic standards are undoubtedly a key priority for us as a school and as a governing body we work closely with Miss Truelove and her senior leadership team to ensure that this is achieved. The governing body have noted the continued improvements in our end of key stage results. New strategies for teaching have been implemented. Our pupils are motivated and engaged in their learning and our predicted targets show that standards will continue to improve.

As governors, we continue to look at our own practices to ensure that we are as effective as we can be. Governors have been spending even more time attending governor training courses, networking with governors from other schools and spending time in school. The governors are linked to particular areas and work in teams to develop, monitor and analyse this specific element of school life.

This academic year has been another busy one for our school community primarily due to the building project and expansion of our school. Very soon the children will be enjoying the benefits of the excellent facilities that the project will provide us with, including 4 new classrooms, hall extension, extra parking, new kitchen, new toilets and interior decoration.

This leads me to continue to thank Sarah Truelove, our Headteacher. Sarah and her dedicated team are continuing to move the school forward, to improve and to innovate. I would also like to extend my thanks to all staff at Cwmffrwdoer Primary School, a lot of hard work goes into making our school the success that it has become. All staff have played a key part in that. Our committed members of Cwmffrwdoer PTA work tirelessly to fundraise throughout the year to enhance the school life of our pupils. We are always grateful to all those who help in school on a voluntary basis. My thanks must also go to all of you, our parents and carers for the part that you play in your child's education. The strong partnership between home and school is vital and a very positive feature of the school. A final thank you must go to the most important people in our school, the pupils themselves. They are great ambassadors for our school. They continue to be a credit to you.

Cwmffrwdoer is fortunate (and, as Chairman, so am I) to be supported by such a hard-working, knowledgeable, experienced and willing team of governors. We welcome input from parents and the local community and our pupils continue to benefit from the support received through these strong partnerships.

I look forward to the coming year and would welcome your views and comments. Please feel free to contact me on any issue regarding the school on Nicola.davies.1@hotmail.co.uk.

Kind regards

N.Davies

Head Teacher Introduction

After another very busy year in Cwmffrwdoer Primary, it gives me pleasure to introduce this Annual Report for governors and parents. All staff have worked very hard during this last year on School Development Plan priorities and maths is an area which continues to be developed across the school this year. There have been many challenging and rewarding experiences for pupils and staff in the last year.

The learning environment continues to be a focus across the whole school. Plans for the extension are underway which has brought some challenges as the KS2 yard and school field are not able to be fully used. However, parts of the internal building have been modified including the Foundation Phase classrooms, cloakroom areas and Key Stage 2 toilets.

Pupils have represented our school in various events; sporting events including cricket and football tournaments as well as Torfaen mini-Olympics, on various school visits and field trips including a residential visit to Tregoyd House in Brecon, whole school trips to pantomimes, and a Harvest service in Ebenezer Chapel. Pupils' have made staff and myself very proud with their behaviour and conduct.

The PTA make huge efforts to raise money for the school although they are only a very small group of committed parents who have become even smaller this year. The PTA subsidise the cost of some whole school trips (such as pantomimes) and resources for the parents. Without their help towards costs, such trips would be very expensive for parents/carers.

The PTA do need your continued support. Please help in any way you can, their efforts benefit every single child in our school. Mrs Lisa Barret has recently stood down due to work commitments and I would like to thank her on behalf of the school for all her hard work and efforts. Mrs Jarman continues to be the link teacher.

All staff and governors hope that your child's experience in Cwmffrwdoer primary school is happy and worthwhile. The school is committed to ensure the best teaching and learning experiences across the curriculum. We ask all parents to support their child's learning and establish positive relationships with school.

I look forward to continuing to work in partnership with you over the forthcoming years to ensure that standards continue to rise and that each and every child receives the best possible experiences.

Sarah Truelove

Head.cwmffrwdoerprimary@torfaen.gov.uk

Our Governors

CHAIR:

Mrs N. Davies
Cwmffrwdor Primary School
Waunddu, Pontnewynydd, PONTYPOOL
Torfaen. NP4 6QZ

Tel: 01495 742761

CLERK TO GOVERNORS:

Mrs Vicky Clode
Pearl House, Torfaen.

Governor Type	Governor Name	Start Date	End Date
Community	Cllr Barry Taylor	2/10/14	1/10/18
Community	Mrs Fliss Clarke	26/11/14	25/11/18
Community	Ann Morgan	18/4/13	17/04/17
Community	Cllr Elaine Chilcott	1/3/15	28/2/19
Headteacher	Miss Sarah Truelove	01/09/2012	N/A
LEA Appointed	Mrs Nicola Davies	14/11/2011	13/11/19
LEA Appointed	Pastor Richard Miles	01/09/17	31/08/20
Parent	Mrs Melanie Samuel	04/12/14	03/12/20
Parent	Mrs Caroline Moses- Jones	01/09/17	31/08/21
Parent	Mrs Melanie Crockett	8/1/15	7/1/19
Parent	Mrs Bethan Middle	8/1/15	7/1/19
Teacher Representative Non voting	Miss Hannah Davies Mrs Jane Jones	01/09/2014	31/08/2018

School Vision, Mission Statement and Aims

Our mission statement:

"Happy, together, learning and caring"

Our Vision Statement

Children are happy, engaged and excited. They show curiosity, a love of learning and are successful and confident learners. They are supported in a nurturing and safe environment and are encouraged to become independent life long learners with positive attitudes and high aspirations!

Aims:

- To ensure children are safe, happy and can develop in a nurturing environment
- To engage, excite and develop children's curiosity and love of learning.
- To ensure children have the skills to become life-long learners for a successful future.
- To work collaboratively with parents/carers and to value parent contributions.
- To be inclusive through personalising learning to meet the needs of all learners.

Cwmffrwdoer Primary School - The School Day

Foundation Phase		Key Stage 2	
8:50 am	Children arrive at School	8:50 am	Children arrive at School
8:55 - 9:00	Registration	8:55 - 9:00	Registration
9:00 - 9:30	Reading/Welsh	9:00 - 9:30	Reading/Welsh
9:30 - 9:45	Assembly	9:30 - 9:45	Assembly
9:45 10:45	Session 1	9:45 11:00	Session 1
11:00 12:00	Session 2	11:15 12:20	Session 2
12:00 - 13:05	Lunch	12:20 - 13:05	Lunch
13:05 - 13:10	Registration	13:05 - 13:10	Registration
13:10 - 14:25	Session 3	13:10 - 14:20	Session 3
14:25 - 15:10	Session 4	14:20 - 15:10	Session 4

Since September 2016, every class takes part in a 'Daily Mile' session at the same time each day. This takes a maximum of 15 minutes.

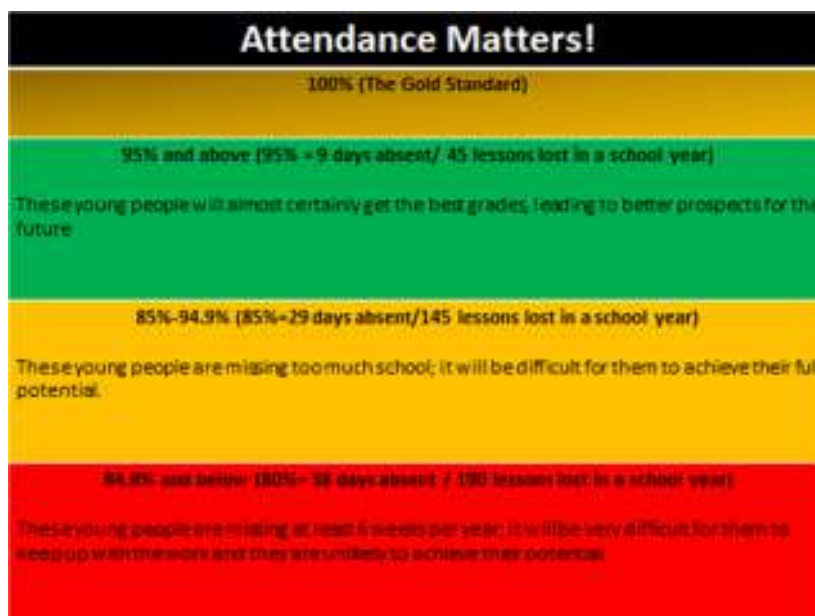
Attendance Record for 2016/2017

Attendance Target 2016/17	Actual Attendance 2016/17	Unauthorised absence target 2016/17	Actual Unauthorised Absence 2016/17
94.5%	94.5%	0.5%	0.7%

SCHOOL ATTENDANCE - TRAFFIC LIGHT SYSTEM

We have a half termly 'Traffic Light' system as a way to monitor attendance at school. At the end of each half term, we send out attendance letters to celebrate good attendance levels and to highlight any areas of concern.

The minimum attendance level which is expected for all children nationally is 95%. Good attendance is very important so that children are given as much opportunity as possible to develop academically and socially. When children are absent from school they often find it difficult to catch up on the work they have missed and can feel unsettled by this.



The Curriculum

All pupils are taught according to the National Curriculum and the curriculum is arranged so that skills are progressive according to children's abilities.

At Cwmffrwdoer our broad and balanced curriculum provides our pupils with opportunities to engage in learning that is creative, challenging and experiential. We aim to offer a wide and diverse range of experiences that inspire all our children. All teaching is planned and structured to ensure children are given every opportunity to develop as effective learners and responsible citizens.

The Literacy and Numeracy Framework (LNF)

The National Literacy and numeracy Framework (LNF) is now statutory and is part of the Welsh Government's drive to raise standards and break the link between deprivation and educational attainment.

The LNF helps to develop a cross-curricular approach to strengthening literacy and numeracy teaching, learning and assessment.

The Welsh Language

We are very proud of our 'Welshness' at Cwmffrwdoer. Welsh is a compulsory subject for all pupils throughout the school. All staff use 'incidental Welsh' throughout the day and encourage children to do so wherever possible including 10 minutes daily in all classes each morning. We support Welsh cultural life and provide our pupils with opportunities to celebrate and explore Welsh culture across the curriculum. As a school, we feel it's important to recognise and celebrate our heritage.

Children with Additional Educational Needs

Every Child Counts



The main approach, contained in the law and in national codes of practice and guidance, is that children with additional educational needs should be included in mainstream services. Most children will have their needs met successfully in this way. We ensure that additional and differing needs of children are identified early and that Individual Educational Plans (IEP's) are put in place and reviewed regularly. We place great importance on involving and working closely with the parents in achieving this. In addition, any issues about the child's progress can be taken up with the class teacher and, beyond that, with the Head Teacher. We are proud of our "open door policy" and friendly, caring, inclusive ethos. Specialists from a variety of services including the Educational Psychology Service, health service and Pupil Referral Unit (PRU), are available as necessary, for the assessment and meeting of additional needs.

The Additional Educational Needs Coordinator (AENCo) is Mrs Jane Jones. She is responsible to the Headteacher for the operation of the School Policy. The Governors, who have approved the policy, have appointed a Governor with responsibility for additional needs. Mrs Ann Morgan undertakes this role and she provides a link with the staff, especially through the Coordinator.

Mrs Jones, as AENCo attends all relevant training courses and cluster meetings and updates learning materials and resources. She monitors, termly, the progress and targets for each child with an IEP and meets support staff regularly. She is involved in partnership arrangements for the transition of children within, to and from our school.

A register must be kept for all children with Individual Education Plans. In 2016/2017 we had 41 children on the register. There was one child with a formal statement of Special Educational Needs. Out of the children on the register, 29 were identified for additional support within the school (known as school action) and 13 were provided with additional support externally, for example involving the Educational Psychologists (known as School Action Plus).

If you require any further information regarding our additional educational needs provision, please contact Mrs Jane Jones AENCo, the Head Teacher or Mrs Ann Morgan, Governor, with responsibility for Additional Educational Needs.

Children with Disabilities

Every Child Counts



The school has legal duties in respect of children or prospective children with disabilities. We recognise this in our policies, procedures and practices, which we keep under review.

Disabled children may have additional learning needs. However, not all disabled children will have special educational needs. We have an accessibility plan which recognises the need for access to the curriculum and for physical access and a Strategic Equality Plan in place.

SCHOOL TERMS & HOLIDAYS 2017 - 2018

Term	Term Begins	Half Term Begins	Half Term Ends	Term Ends
Autumn	Monday 04.09.17	Monday 30.10.17	Friday 03.11.17	Friday 22.12.17
Spring	Monday 08.01.18	Monday 19.02.18	Friday 23.02.18	Thursday 01.03.18
Summer	Monday 16.04.18	Monday 28.05.18	Friday 01.06.18	Tuesday 24.07.18

There will be two further training days which have not been confirmed yet. They will not take place this term.

A School Prospectus is available from the office.

National Curriculum Assessment Results - 2017

End of Key Stage assessments are based on continual teacher assessment.

The expected level at the end of the Foundation Phase is Outcome 5

Foundation Phase Teacher Assessment	Percentage of children at each outcome			
	Outcome 5+		Outcome 6	
	Wales	School	Wales	School
Language, Literacy & Communication (LLC)	88	90	38	27
Mathematical Development (MD)	90	87	39	30
Personal & Social Development, Well-being & Cultural Diversity (PSDWBCD)	95	100	62	80
FPI Foundation Phase Indicator <small>Summary of the percentages of pupils attaining Outcome 5 or above in LLC, MD and PSDWBCD in combination</small>	87	83	N/A	
Total number assessed - 30 pupils				

Explanation of outcomes achieved at the end of Foundation Phase (7 year olds)

- Outcome 4 - Working towards expected level
- Outcome 5 - Achieved expected level
- Outcome 6 - Exceeded expected level

Key Stage 2

Key Stage 2 Teacher Assessment	Percentage of pupils at each level			
	Level 4		Level 5	
	Wales	School	Wales	School
English	92	87	45	28
Maths	92	86	47	24
Science	92	93	46	38
CSI Core Subject Indicator Summary of the percentages of pupils attaining Level 4 or above in English, Mathematics and Science in combination	90	83	N/A	
Total number assessed - 29 pupils				

Explanation of levels achieved at the end of Key Stage 2 (11 year olds)

- Level 3 Working towards expected level
- Level 4 Achieved expected level
- Level 5 Exceeded expected level

Target Setting 2017-2018

Subject	Foundation Phase % Pupils predicted to achieve...	
	2017 - 18	
	Outcome 5+	Outcome 6+
Language, Literacy & Communication	90%	33%
Mathematical Development	93%	37%
Personal & social education, well-being & cultural diversity	100%	60%
*FPI	87%	33%

Subject	KS2 % pupils predicted to achieve L4+ and L5	
	L4+	L5
English	92%	38%
Maths	92%	38%
Science	96%	38%
*CSI	92%	29%

Cwmffrwdoer Primary School
Happy, together, learning and caring

This report uses data for 2017 for LA and Wales comparative information

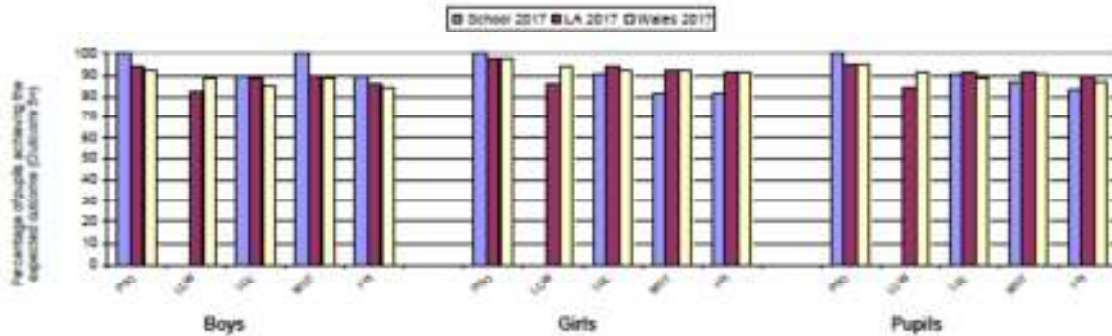
Cwmffwrdoer Primary
Torfaen

LA/School no: 678/2298

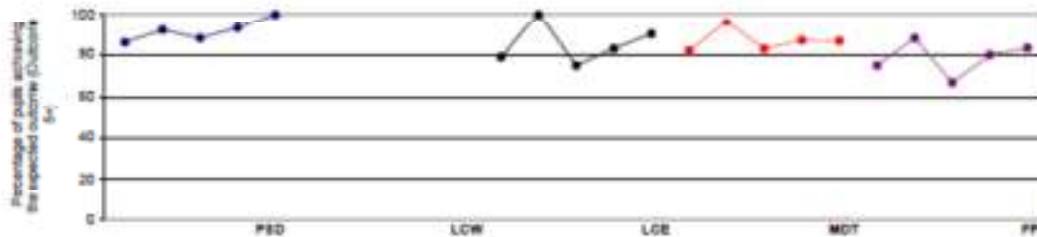
School comparative information: Foundation Phase Outcomes 2017 with benchmarking

Percentage of boys, girls, and pupils achieving at least the expected outcome (Outcome 5+):

	Boys			Girls			Pupils		
	School 2017	LA 2017	Wales 2017	School 2017	LA 2017	Wales 2017	School 2017	LA 2017	Wales 2017
PSD	100	94	92	100	97	97	100	96	96
LCW	0	82	88	0	86	94	0	84	91
LCE	89	88	85	90	94	92	90	91	88
MDT	100	89	88	81	92	92	87	91	90
FPI	89	86	84	81	91	91	83	89	87



School Performance over time (2013 - 2017)



Contextual Information

Benchmarked against schools with a similar percentage of pupils eligible for free school meals.

School's results shown in greyed boxes. Column headings refer to...

- Quarter 1 School is in the top 25 per cent.
- Quarter 2 School is in the top 50 per cent but not the top 25 per cent.
- Quarter 3 School is in the bottom 50 per cent but not the bottom 25 per cent.
- Quarter 4 School is in the bottom 25 per cent.

Free School Meal Group

More than or equal to 24 per cent and up to 32 per cent eligible for FSM

	Quarter 4	Lower Quartile	Quarter 3	Median	Quarter 2	Upper Quartile	Quarter 1
PSD		93		96		100	100
LCW		80		92		100	
LCE		83		89	89	90	
MDT		85	87	90		94	
FPI		80	83	88		92	

The benchmarks have been calculated using a three-year average for Free School Meal data.

Notes:

1. - = No historical data available
2. Areas of learning: PSD = Personal and social development, well-being and cultural diversity; LCW = Language, literacy and communication skills (in Welsh); LCE = Language, literacy and communication skills (in English); MDT = Mathematical development; FPI = Foundation Phase Indicator. To achieve the FPI, a pupil must achieve at least the expected outcome (Outcome 5+) in both PSD and MDT and either LCW or LCE.
3. If there were no pupils eligible for assessment in a subject for a particular year the graph will discontinue and show a gap for that year.

This report uses data for 2017 for LA and Wales comparative information

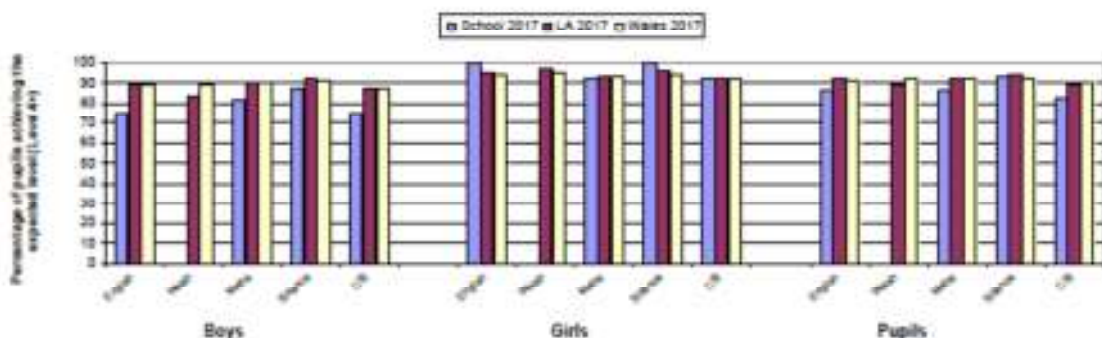
Cwmffrwdoer Primary
Tortfaen

LA/School no: 678/2298

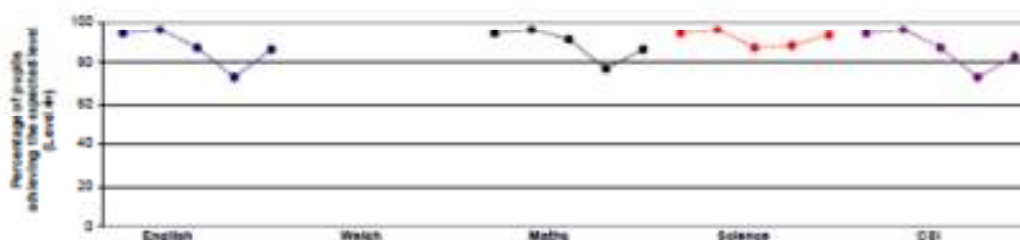
**School comparative information: National Curriculum Assessments 2017 with benchmarking
Key Stage 2**

Percentage of boys, girls, and pupils achieving at least the expected level (Level 4+):

	Boys			Girls			Pupils		
	School 2017	LA 2017	Wales 2017	School 2017	LA 2017	Wales 2017	School 2017	LA 2017	Wales 2017
English	75	89	89	100	95	94	86	92	91
Welsh	0	83	89	0	97	95	0	89	92
Maths	81	90	90	92	93	93	86	92	92
Science	88	02	91	100	08	94	93	04	92
CSI	75	87	87	92	92	92	83	89	90



School Performance over time (2013 - 2017)



Contextual Information

Benchmarked against schools with a similar percentage of pupils eligible for free school meals.

School's results shown in greyed boxes. Column headings refer to...

Quarter 1 School is in the top 25 per cent.

Quarter 2 School is in the top 50 per cent but not the top 25 per cent.

Quarter 3 School is in the bottom 50 per cent but not the bottom 25 per cent.

Quarter 4 School is in the bottom 25 per cent.

Free School Meal Group

**More than or equal to 24 per cent
and up to 32 per cent eligible for
FSM**

	Quarter 4	Lower Quartile	Quarter 3	Median	Quarter 2	Upper Quartile	Quarter 1
English		85	86	89		94	
Welsh		83		90		100	
Maths	86	86		91		95	
Science		88		91	93		97
CSI	83	83		88		93	

The benchmarks have been calculated using a three-year average for Free School Meal data.

Notes:

- Figures for Welsh refer to attainment in Welsh first language only.
- CSI = Core Subject Indicator. To achieve the CSI a pupil must achieve at least the expected level 4 in both Mathematics and Science and either English or Welsh first language.
- If there were no pupils eligible for assessment in a subject for a particular year the graph will discontinue and show a gap for that year.

After School Provision at Cwmffrwdoer
To enhance and enrich the curriculum for our children

Due to the commitment, dedication and hard work of our staff, the school offers a superb variety of extra-curricular activities which take place at break times and after school. Current activities include:

Monday	Digital Leaders - Mr Hawker Sports Club (rugby/football) - Mr Wharton/Mr Hawker Netball Club - Mrs Taylor Choir - Miss Deneen
Wednesday	Criw Cymraeg - Mrs Howells Grub Club - Mrs Jarman
Thursday	Eco-Club - Mrs Jones/Mr Manning Newspaper Club - Mrs Brettell

Eco-Schools and Eco-Committee

Eco Schools is a European initiative that encourages children within their school to act upon environmental responsibilities and issues. Eco Schools promotes care, to look after our world and our environment. At Cwmffrwdoer Primary School we take care of our environment in the hope that it will benefit local and global issues.

In Cwmffrwdoer Eco-Schools promotes action to make our school a sustainable environment. Through our school initiatives, we have gained the three main stages of establishing ourselves as an Eco-School: Bronze Award, Silver Award and the Green Flag. Last year, we were awarded the prestigious Platinum Flag which is the highest Eco accolade after being awarded the second Green flag for sustaining environmental work.

Eco-Committee 2017-2018

The Eco-Committee has proven to be a very popular group this year. We currently have representatives from each year group from Year 1. We are continuing our work on recycling by collecting the waste paper from all classes and bagging it up ready for collection. Reducing energy and water are other important school issues. Groups of pupils using a rota system check the school at break-times to ensure that class lights and projectors are turned off and water taps are closed. Classes are awarded in our weekly celebration assemblies for being the best eco-savers

The Eco-Committee's main focus is the schools outdoor environment. Pupils have used their ideas to create designs to change the schools woodland area into a learning environment, as well as enhancing the area to attract wildlife.

Eco-Club allows all children to have the opportunity of making a difference and our caretaker, Mr Manning continues to be a very important member.

School Council

Over the past few years the School Council have developed their role in the life of Cwmffrwdoer Primary School. They have worked on several initiatives to help develop the pupil voice within school. This last year, the School Council have been consulted over proposed changes to the school under the 21st Century Schools' Programme as well as reviewing the School Mission Statement and aims. The School Council also decide on charities to support throughout the year and have organised fund raising events as well as writing letters to keep parents/carers informed. The council is elected by the pupils after nominations and elections in every year group from Year 1 to Year 6. We use equipment borrowed from Torfaen Electoral Services.

Social and Emotional Aspects of Learning (SEAL)

SEAL is used throughout the school. We feel that in Cwmffrwdoer every child is of great importance and we believe that for each pupil to learn, they need to be happy, confident, understand themselves, understand their feelings, know how to get on with each other and make friends.

To help all our children achieve this we will work in school on special activities that will develop these skills. Each half-term we explore a particular theme. Each theme begins with an assembly and follows up with various activities in each classroom. We always begin the new school year with the theme 'New Beginnings.' 'Say No to Bullying' always links with national Anti-Bullying Week.

Each class will explore how they can create a 'good learning environment.' This will help children work and learn together in a positive, caring and safe atmosphere. SEAL lessons also encourage our children to express their feelings. In SEAL lessons, pupils share times when they are happy, sad, scared and excited and how to recognise and manage these feeling in the classroom.

Many of the SEAL activities promote discussion and thinking and help pupils to express how they feel about being a member of Society.



The statutory curriculum for all 3 to 7 year olds in Wales is the Foundation Phase.

It encourages children to be creative, imaginative and makes learning more enjoyable and more

effective. Children are given opportunities to explore the world around them and understand how things work by taking part in practical activities relevant to their developmental stage.

The Foundation Phase places a greater emphasis on children learning by doing.

The children are given opportunities to gain first hand experiences through play and active involvement in learning and developing skills. There is also a big focus on learning in the outdoors.

Pupils are given time to develop their speaking and listening skills and to become confident in their reading and writing abilities. Learning Mathematics is more practical so that children can see how problems are solved and how important mathematics is in their everyday lives. There is more emphasis on children understanding how things work and on finding different ways to solve problems. Teachers always aim to link learning to real life experiences.

There are currently three classes in the Foundation Phase: Reception, Year 1 and Year 2.

The Key Stage 2 classes (currently four straight year group classes) follow the National

Curriculum for KS2. Key Stage 2 begins in Year 3.

The School in the Community



Cwmffrwdoer Primary School has established many links with its community. Such links include local churches/chapels, local businesses including Peakes Funeral Directors who organise a Fireworks Safety poster competition and the local foodbank who School Council have visited to donate food parcels after harvest collections. Local Police officers and Fire Service regularly visit school. We intend to continue to strengthen these links so that the community can enrich the educational experiences of our children, as well as our school helping the community.

We invite parents in to school for different occasions throughout the year. We have warmly welcomed several visitors who have taken whole school assemblies including Mrs Roynon and Pastor Richards and members of the local groups.

The PTA hold events throughout the year which raise funds to benefit the pupils. These include discos and fetes.

By working together, the community and school can both be enriched and I am always open to your ideas, so please let me know any suggestions!

School Staff - September 2016 to September 2017

Miss Sarah Truelove	Headteacher
Mrs J. Jones	Deputy Head Teacher - Y3 Teacher
Mrs S. Jarman	Reception teacher
Mr A. Hawker	Year 5 teacher
Miss H. Davies	Year 1 Teacher, SLT
Miss L. Deneen	Year 1 teacher, maternity cover
Mr Wharton	Year 4 Teacher
Mrs. A Brettell	Year 6 Teacher SLT , TLR holder
Mrs T. Howells	Year 2 Teacher, SLT, TLR holder
Mrs L. Evans	NNEB
Mrs A. Hirons	LSA
Mrs T. Webb	LSA
Miss R. Wells	LSA /HLTA
Mrs E. Snook	LSA
Mrs C Lamb	LSA
Miss H Morgan	LSA
Miss J. Whittington	LSA
Miss L. Lavender	LSA
Mrs L Taylor	School Clerk, FT since September 2014
Mr J Manning	Caretaker
Mrs H. Cecen	Midday Supervisor
Mrs R. Dainton	Midday Supervisor
Mrs L. Roberts	Midday Supervisor
Mrs K. Banfield	Midday Supervisor
Mrs S. Curson	School Cleaner
Mrs M. Tudor/Mrs K.Thomas	School Cook
Mrs A. Reed	Assistant Cook

Cwmffrwdor Primary School
Happy, together, learning and caring

Financial Outturn statement 2016/17

	Premises	39,003.08	41,668.53
3HH - Supplies & Services			
Code			
3050	Schools Capitation	14,491.74	27,310.61
3162	Direct Materials	114.07	7.40
3217	Payments Under Contract - Catering	19,188.00	20,893.00
3220	Refreshments	0.00	69.00
3352	Printing - O/S Contractors	6,646.42	6,032.83
3380	Stationery & Office Products	219.98	219.62
3384	Publications/Journals/Periodicals etc	58.91	145.13
3451	Advertising	0.00	0.00
3462	Medical Fees	0.00	119.44
3476	Licences	61.90	50.65
3501	Postages	0.00	0.00
3510	Telephone - Call Charges & Rentals	248.88	178.29
3514	Mobile Telephones	473.04	117.78
3545	IT Hardware (inc Printers & Scanners)	1,342.85	0.00
3548	IT Software	0.00	169.66
3702	Contingency	0.00	3,363.50
	Supplies & Services	42,845.79	58,676.91
3KK - Third Party Payments			
3812	School Music Service	930.00	0.00
	Third Party Payments	930.00	0.00
3MM - Transfer Payments			
5045	Re-distributed Grant Monies	0.00	0.00
		0.00	0.00
	Transfer Payments	0.00	0.00
3NN - Support Services			
6041	Swimming SLA	1,486.80	1,486.80
6042	Schools SLA	32,037.00	33,875.00
	Support Services	33,523.80	35,361.80
3YE - Other Budgets			
6052	From Other Departments	0.00	(15.00)
	Other Budgets	0.00	(15.00)
		679,046.40	734,918.60
8710	Budget Share	(670,410.00)	(719,616.00)
8715	School Budget Share - Funding Adjustment	(16,945.00)	(2,016.00)

33564

33564

Service Level Agreements

	School Funding	(687,355.00)	(721,632.00)
3RR - Government Grants			
8000	Government Grants General	0.00	0.00
8050	SCHOOLS grant allocation (schools only)	(402.50)	(300.00)
8074	Welsh Assembly Government	(300.00)	(2,450.00)
	Government Grants	(702.50)	(2,750.00)
3SS - Other Funding & Contributions			
9566	Misc Cash - Over/Unders and Float	15.50	0.00
	Other Funding & Contributions	15.50	0.00
3TT - Customer & Client Receipts			
8312	Other Receipts Miscellaneous	(5,225.50)	(4,611.50)
8358	Other Tuition Fees	(231.00)	0.00
8703	Supply Cover/SMP - Insurance Refund	(5,130.00)	(1,360.00)
8704	Contingency - Special Needs	(5,616.00)	0.00
8720	Supply of Teaching Staff (prov of Educ)	(1,945.00)	(125.00)
	Customer & Client Receipts	(18,147.50)	(6,096.50)
3UU - Recharges			
8292	Int. Income - Mutual Absence Fund	0.00	(2,710.00)
	Recharges	0.00	(2,710.00)
		(706,189.50)	(733,188.50)
	Total for : Income		
B324 - Fund Balances & Reserves			
9101	School Balances	13,580.28	(13,562.82)
	Fund Balances & Reserves	13,580.28	(13,562.82)
		13,580.28	(13,562.82)